



OUR EFFORTS... YOUR HOME



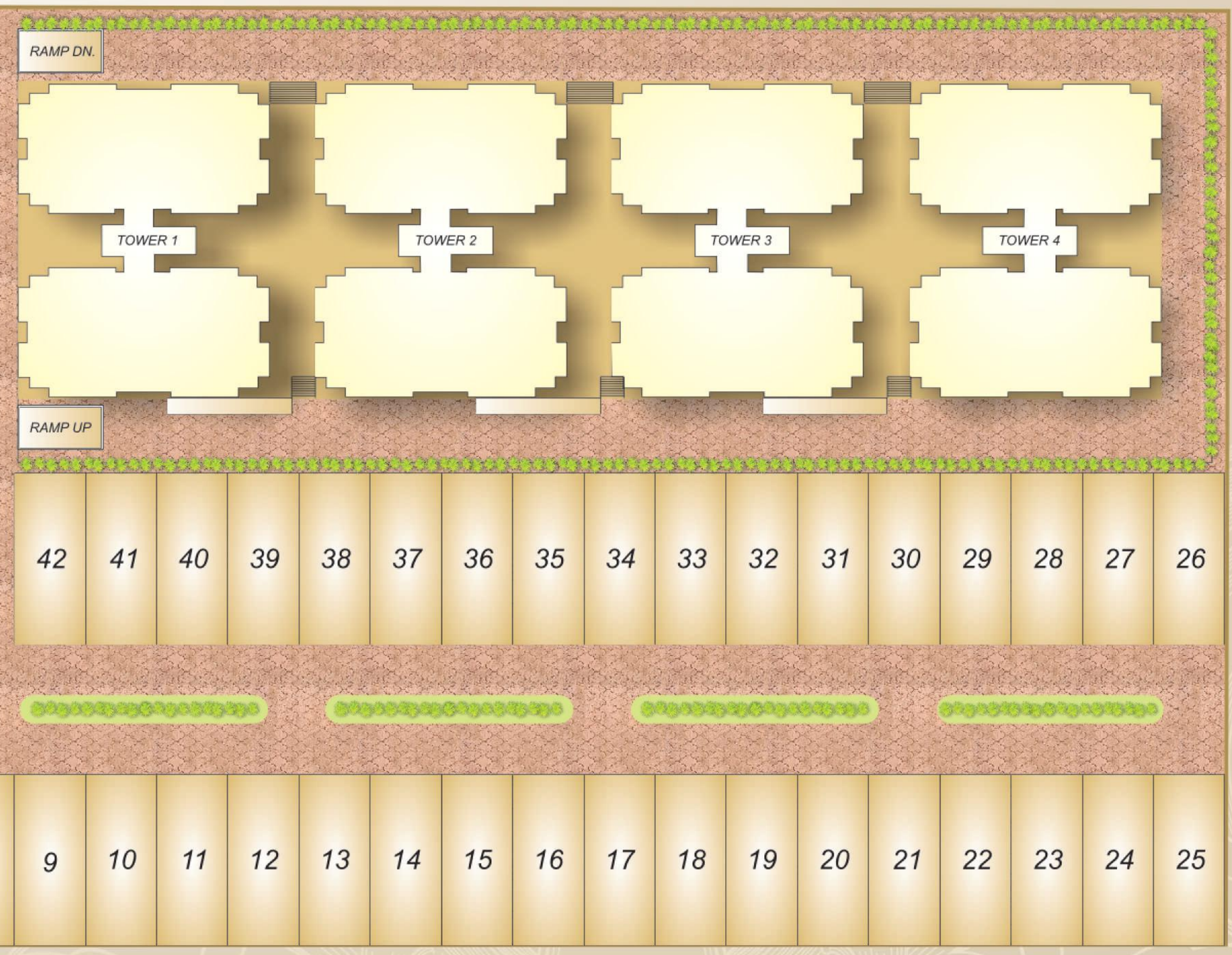
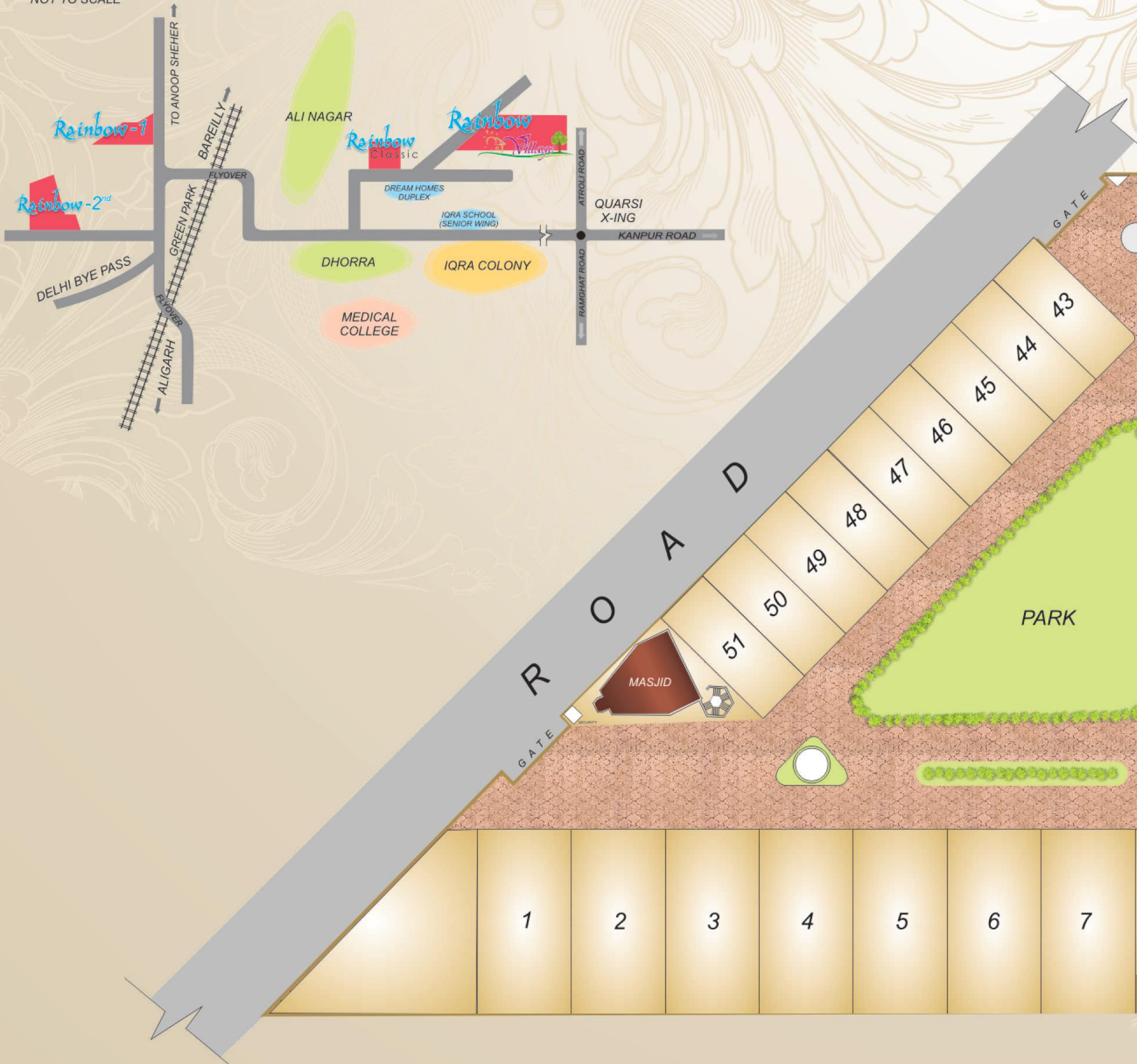
SS  
DEVELOPERS

Behind, IQRA PUBLIC SCHOOL (SENIOR WING)  
GREATER DHORRA, ALIGARH,  
CELL: + 91 9756929117, + 91 9756280957, + 91 8077415721  
ssdevelopersaligarh@gmail.com

Rainbow  
Village

This brochure is an imaginary concept and the plan shown need not to the scale. All plans are subject to accommodate the changes required as per the sanctioning authorities. All amenities and specifications are as per availabilities and discretion of the developer. Nature and locations of all amenities and proposed development shown in the proposed master plan can be added, omitted or shifted as per the developer's discretion. (For private circulation only)

**KEY PLAN**  
NOT TO SCALE



**LAYOUT PLAN**

# Rainbow



Trade & ethics go hand in hand. This phrase emphasis an epitome of civilization. But with the advent of human less man, being professional is the new creature, Alas, there are only structures with bricks & requisite materials. But as we say hope prevails in sinking faith. In spite of all the reverse waves, there can be some who with stand the basic principles & etiquettes to perform. One of these groups is ours i.e SS Developers. We have a track record of our work, which has proven our worth time and again. We are a group which has been known for developing housing society par excellence. Art has always been our culture since our infancy in the profession. We have created a new meaning of beautiful houses with our immense sense of aesthetics. The home is not where you only live, but you feel the place, relax in its vicinity & simultaneously a sense of achievement and pride. we consider this as our priority & responsibility. The houses are not only historically significant, but hold an importance as far as workmanship is valued. Not a single hawk eye can point an odd out of our even. Every aspect of infrastructure has been vigilated soulfully. We have given much more of what we get from our clients as a mark of our remunerations. Keeping all these morales inside our head, we have a pleasure to announce another masterpiece to our valued costumers. We are starting another phase of construction, without a personal pride & professional frown. Although duplexes has been our area of specification but the growing demand of high rise towers and a new concept of apartment duplex, We are sure coming this time with truck loads of things. A multi speciality development. This is **Rainbow Village** now, Beautifully placed in more than 3 hectares of land, an independent multicolored villas in different sizes, a duplex apartment within a high rise towers, with all the ambience of a perfect living. Open areas, broad roads with ample plantations & greeneries. **A huge Central park, Jogging tracks. A bulk of common & private parking spaces. A central community hall. Space for club house, library, society office, gym. & mess .** A big artistically **designed Masjid** with a provision of air conditioning. Project will be equipped with rain water harvesting (RWH) facility, to keep the soil nutritioned & **eco-friendly**. Underground sewers & drainage will be as per earlier norms & underground power supply will be part of this project.



## CREATE YOUR OWN CRESCENT... WITH US



# Rainbow Classic

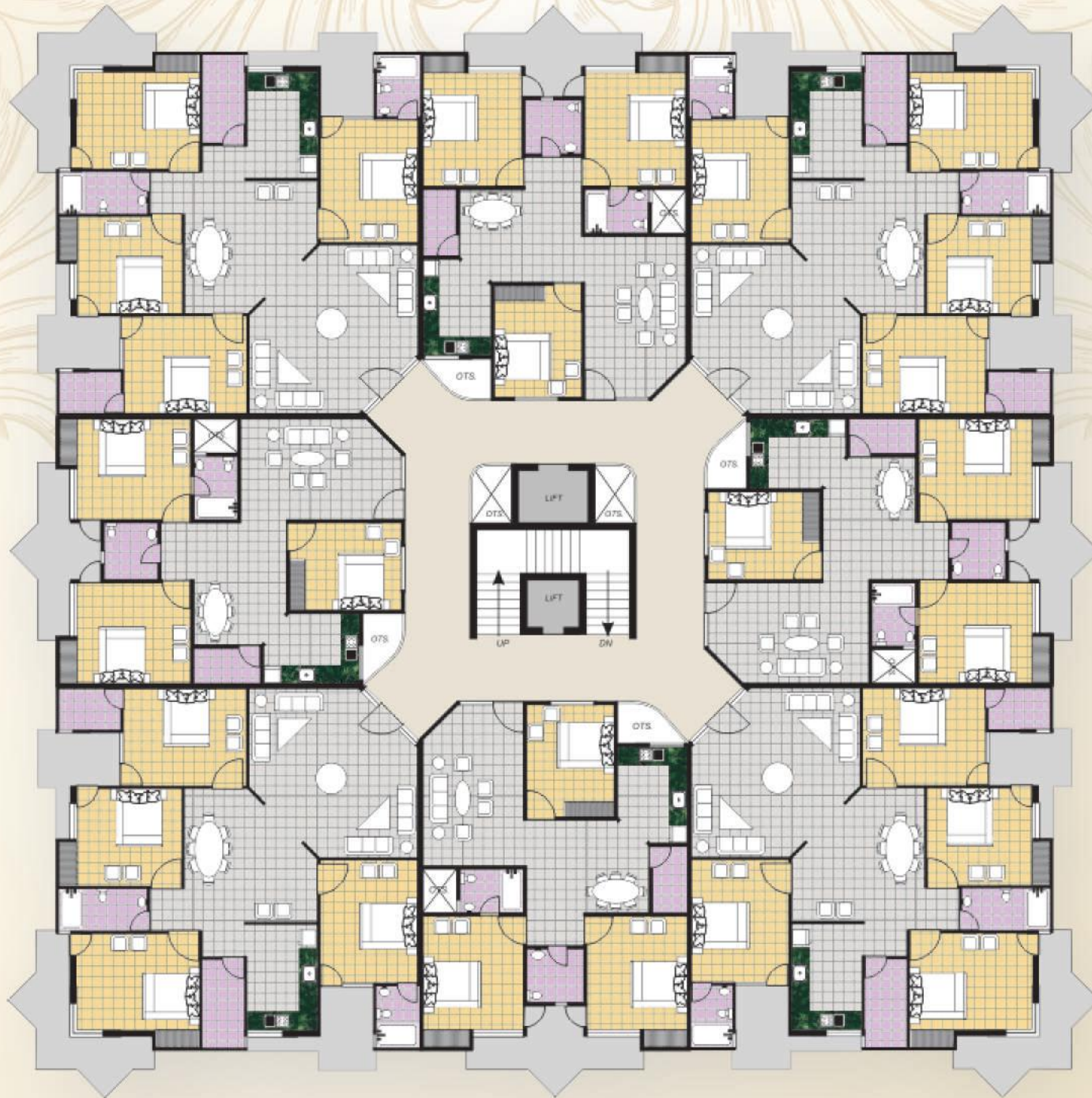
**Apartments:** "Classic", as the name itself suggest, this building is classically constructed, keeping the beauty as its prime importance. Not only beautiful the building is crafted in a manner, that the passer by would atleast give a one complementary stare. This will be a 8 floor apartment in more than 3 beegha s of land. This tower is in close proximity to rainbow village. Infact it's so close that it can feel you that you are almost residing there. It has been build just to fulfill the variety of demand our customer can have, and that too within the same location.

This building has a classic elevation on either sides, large covered sit out balconies are a prima facia of its beauty & Utilities. It shall be comprising of 3 & 4 bedroom units only. All the bedrooms have been given a much needed space with attached toilet cum bathroom while in some dressing space too. Large centralized lobby with a spacious kitchen crafted to meet the regular demands of routine & a chaos of ceremonies. Every bedroom has got a balcony attached with them for their well to do ventilation and to relax in a natural environment. As far as other provisions are concerned & the outer space is filled with **plantation, jogging track, large shrubs & beautiful herbs.** A built up space for guards, **community hall, space for GYM, space for library** will also be part of this project.

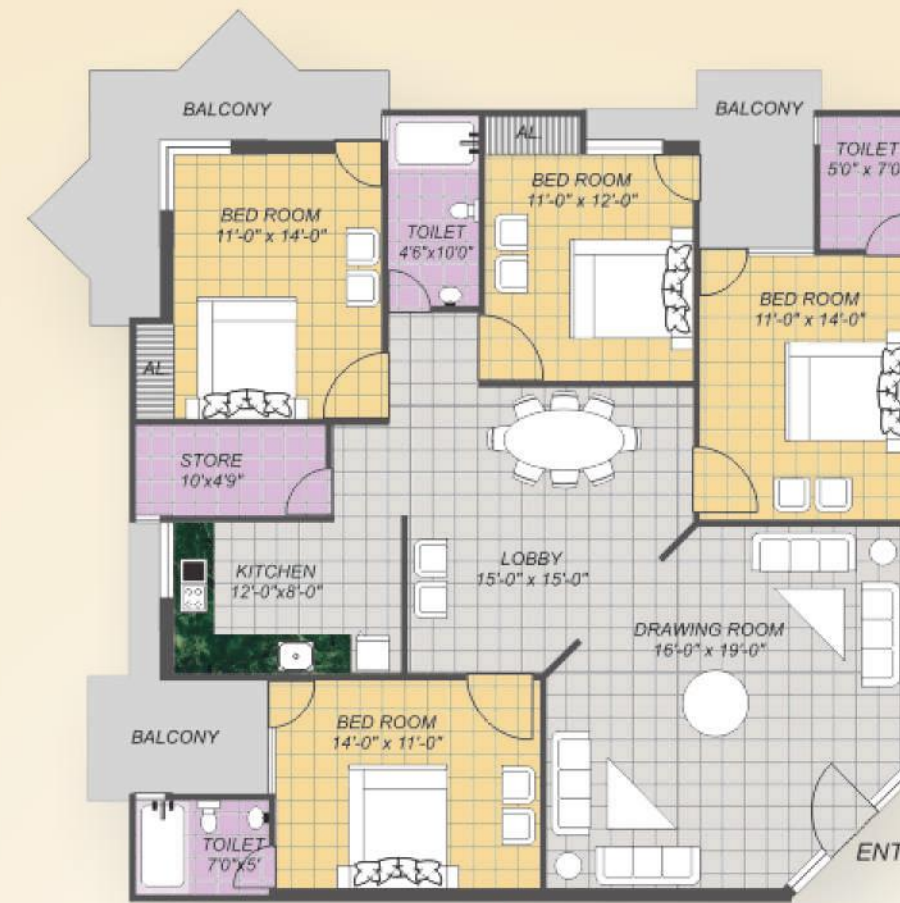


Ground Floor Cluster Plan

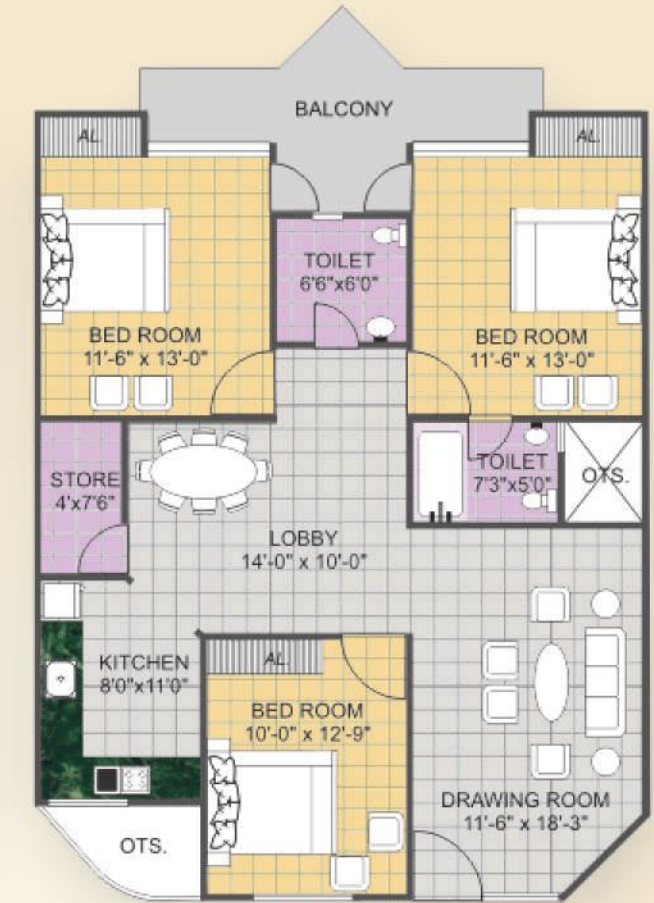
# Rainbow Classic



Typical Floor Cluster Plan



4 BEDROOM UNIT  
2000 SQ.FT



3 BEDROOM UNIT  
1350 SQ.FT

## SPECIAL FEATURES FOR RAINBOW CLASSIC.

- Round the clock water supply.
- Adequate security arrangements through CCTV cameras, guards etc.
- Power backup for common areas, elevators and 4 submersible pumps.
- Convenient shopping area.
- High speed elevators for convenience.
- Separate spaces for community hall, gymnasium and library.
- Jogging track around the building.
- Adequate parking spaces.
- Proper greenery other than central park.



A DREAM HOME  
YOUR NEW  
DESTINATION

# Rainbow Heights

**Duplex Apartments:** It is not a new concept worldwide. But if there is a thing existing in world somewhere, why not in Aligarh. It's a kind of individual two storied house, with in the main framework of a tower. Now you can have your ground floor & a first floor, while being living inside a safe guarded multistoried building. You have your own staircase, while enjoying ride of a common elevator as well. A balcony of a first floor while a view of tenth floor. It is a fusion of civil engineering. It is equipped with two storey parking with an option of two cars sometimes. A community hall for all kinds of amusements, a jogging track, open areas, lush green central park and a compounded colony.



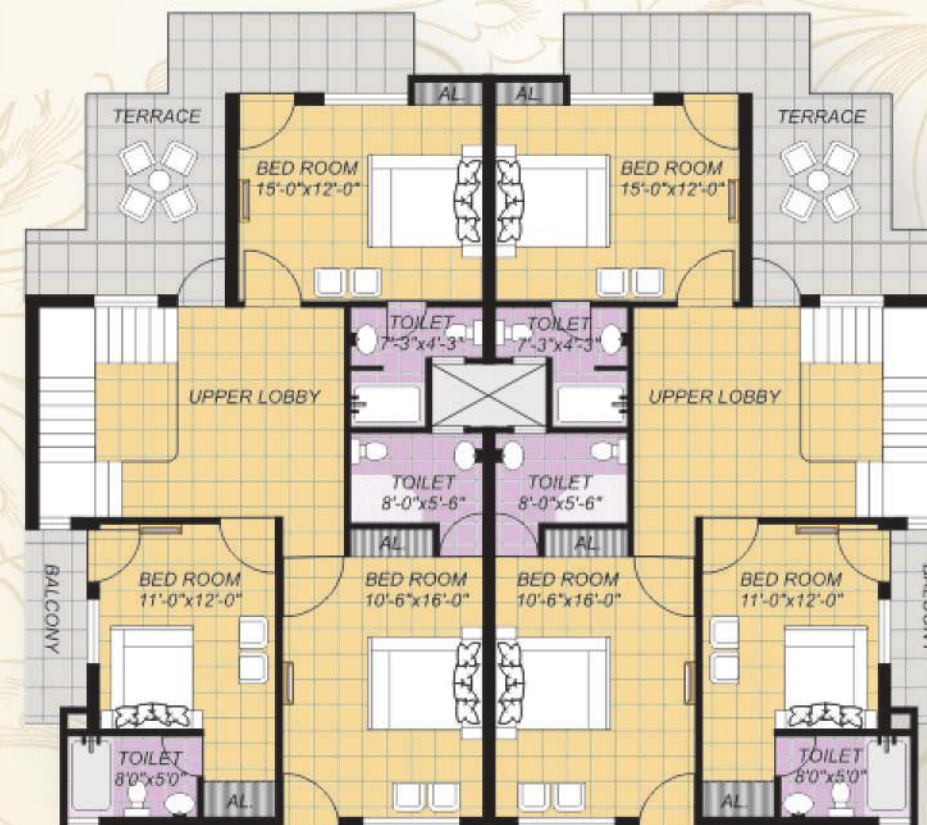
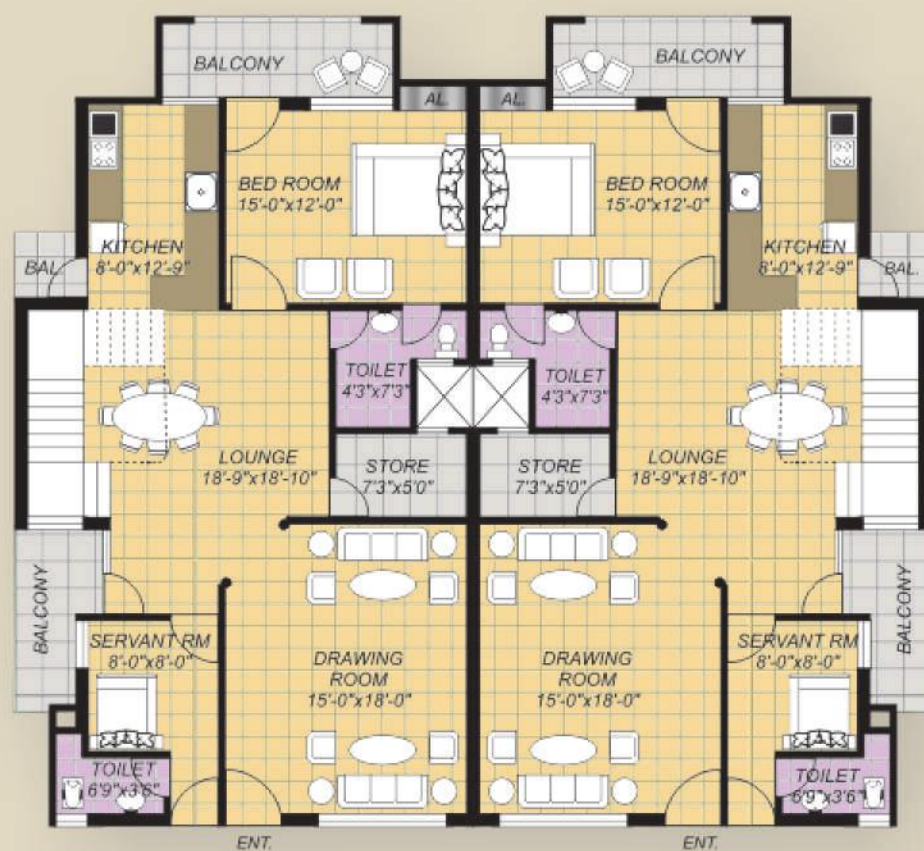
# Rainbow Heights



Lower Floor Plan



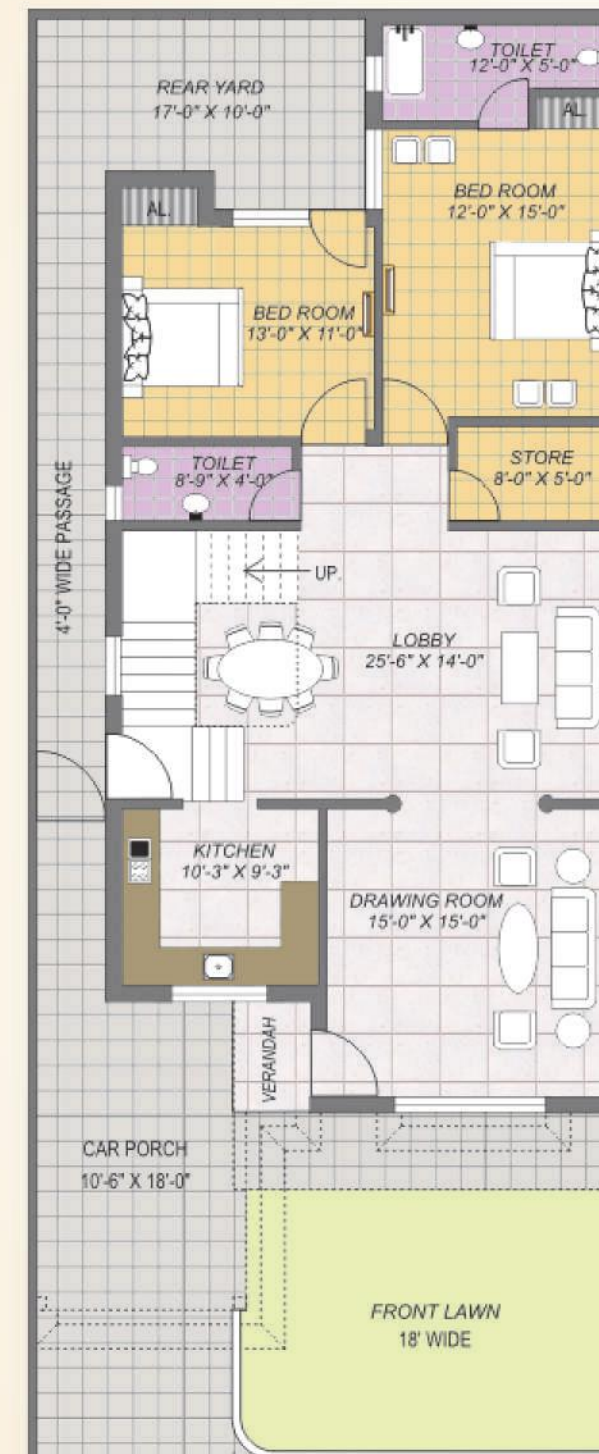
Upper Floor Plan



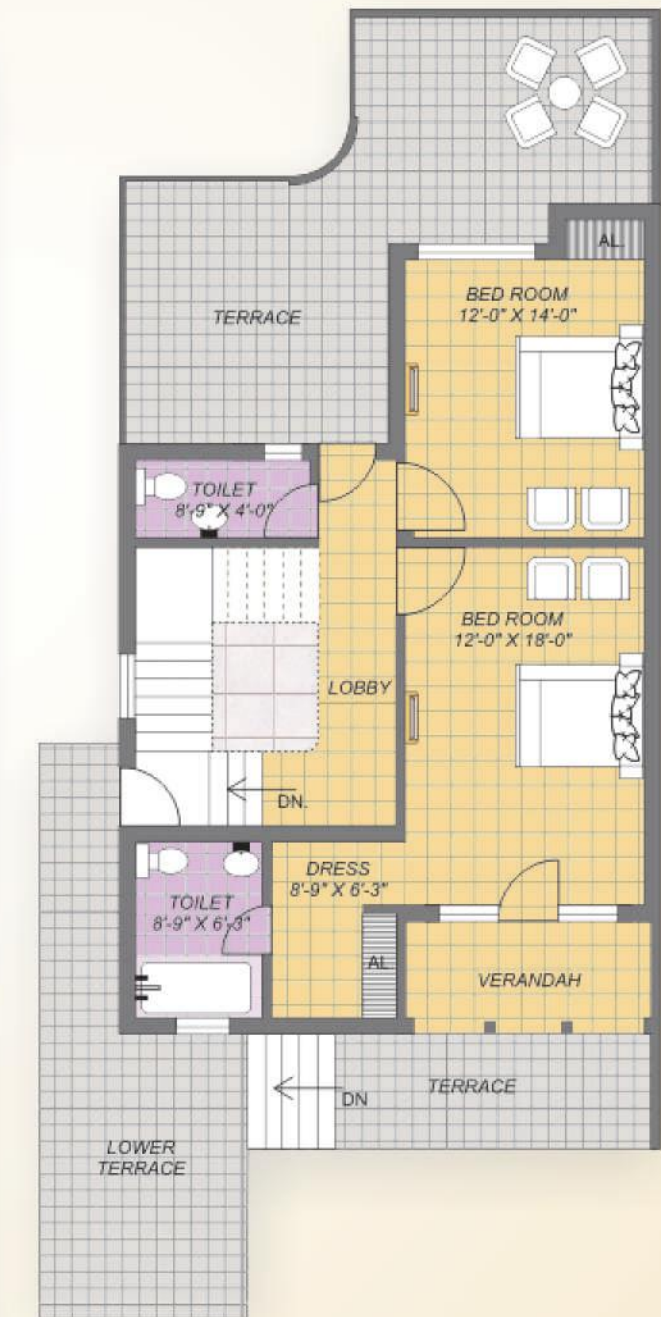
Total Covered Area  
= 2625 Sq. Ft.

# Rainbow Roofs

**Rainbow Villas:** This will be 258 square yard duplex which will be more of an independent villa. It will lack the common sharing wall between the two houses in a row. The ambience and utility in the house is glorified to the upper levels when compared with earlier phases. Modular switch board, best in class paintings, wooden frames of door & windows, upgraded floor and bathroom tiles etc. There will be a separate gallery entry to the house for maids and emergencies. Bedroom sizes and specially lobby sizes is much enlarged, keeping in mind the status of home. Bathroom has been redesigned with added dressings spaces. Master bedroom has been enlarged enough with an elevation facing terraces and a common lower terrace. The lawn has been fenced from front portion as well.



GROUND FLOOR PLAN  
COVERED AREA = 1711 SQ. FT.



FIRST FLOOR PLAN  
COVERED AREA = 991 SQ. FT.

TOTAL COVERED AREA = 2940 (including mumty)  
TOTAL PLOT AREA = 258 SQ. YD.

## SPECIAL FEATURES FOR RAINBOW HEIGHTS AND RAINBOW ROOFS.

- Round the clock water supply.
- Adequate security arrangements through CCTV cameras, guards etc.
- Power backup for common areas, elevators and 4 submersible pumps.
- High speed elevators for convenience.
- Separate spaces for community hall, gymnasium and library.
- Adequate jogging track around the building.
- Adequate parking spaces.
- Well maintained large central park.
- Masjid for internal as well as external peoples.
- Proper greenery other than central park.
- Broad divider along road in front of villas.



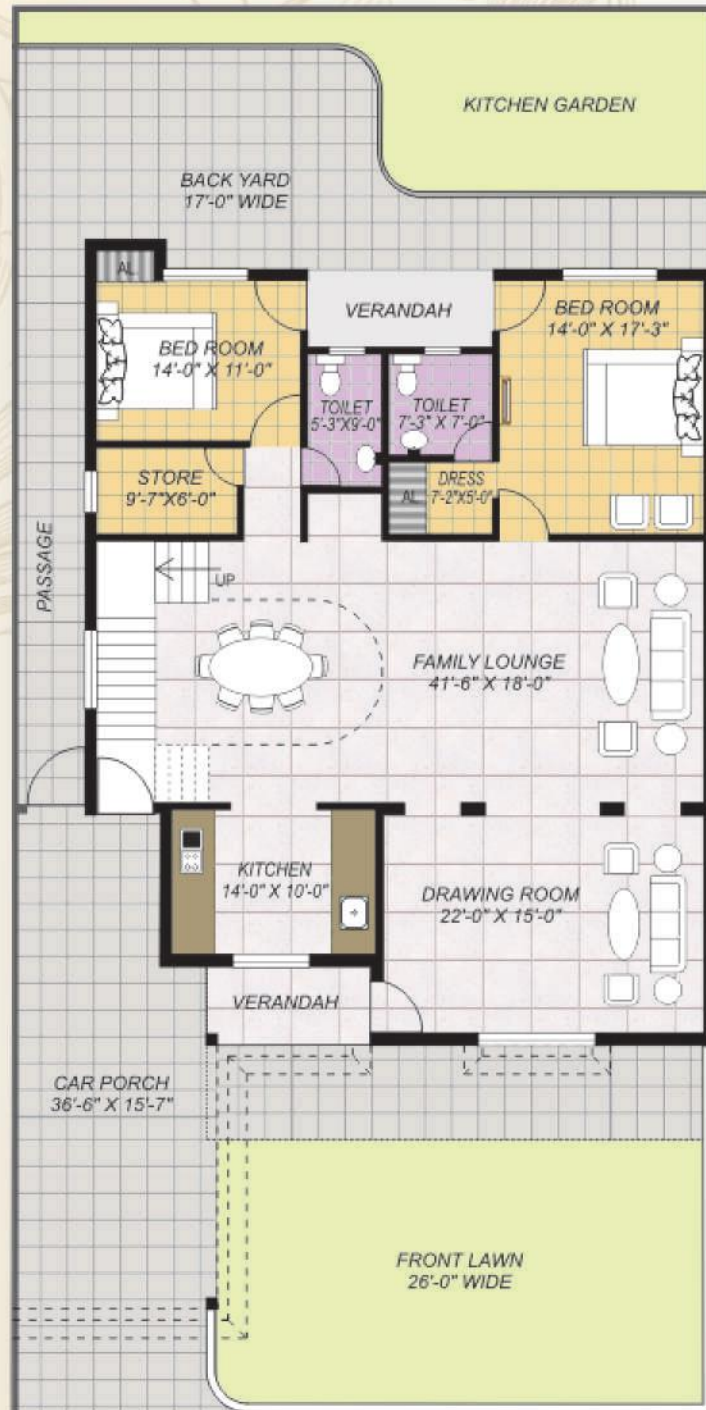


# Rainbow ROOFS PREMIUM

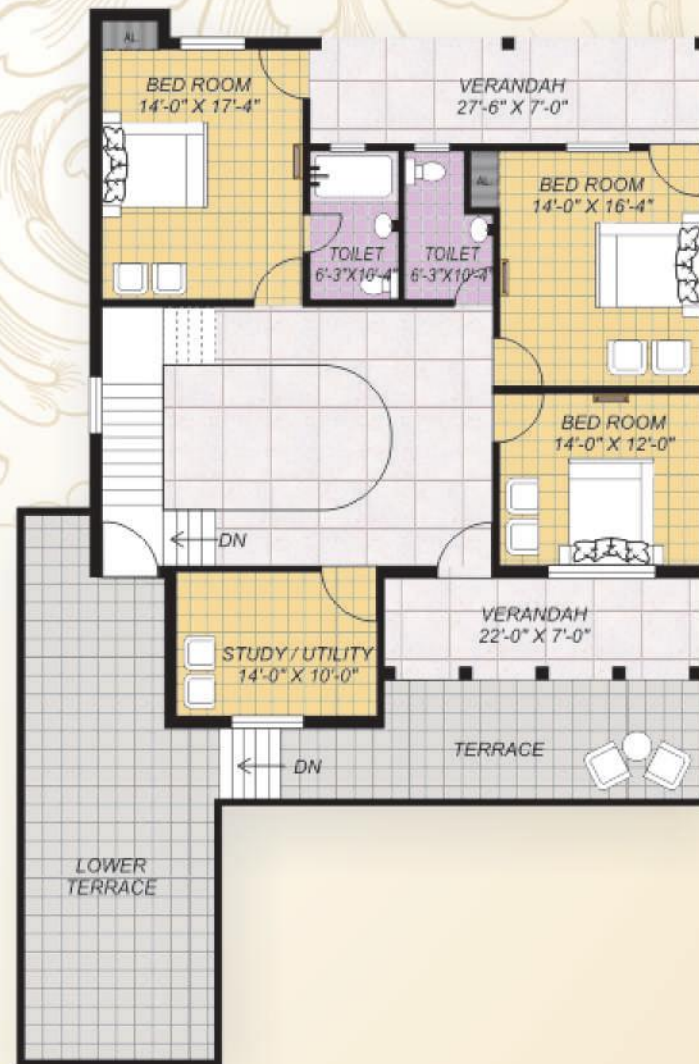
**Rainbow Premium Villas** : If the appreciation is truly deserving, it makes a person being motivated to a level higher than earlier. After the splendid chart busting of RAINBOW-1 and RAINBOW-2. We were much willing to give more, and so with constant perseverance, the wait is finally over. A villa beyond villa, a house beyond utility, a place bigger than beautiful, Premium rainbow villas. Never ever presented in aligarh. A 500 sq. yard fairly castle in human land. Especially made by us for satisfying our inner craft. Every aspect of this home will be state of art be at facia , wood work, plumbing, flooring, gypsum work or anything. You dream of anything and your fulfillment is here, almost nothing has been ignored.

Besides the best legacy of art in the house, you will be having some common exemplary features of rainbow village respectively too. Heaven is here. That's the only sentence lies between your registration & your possession.

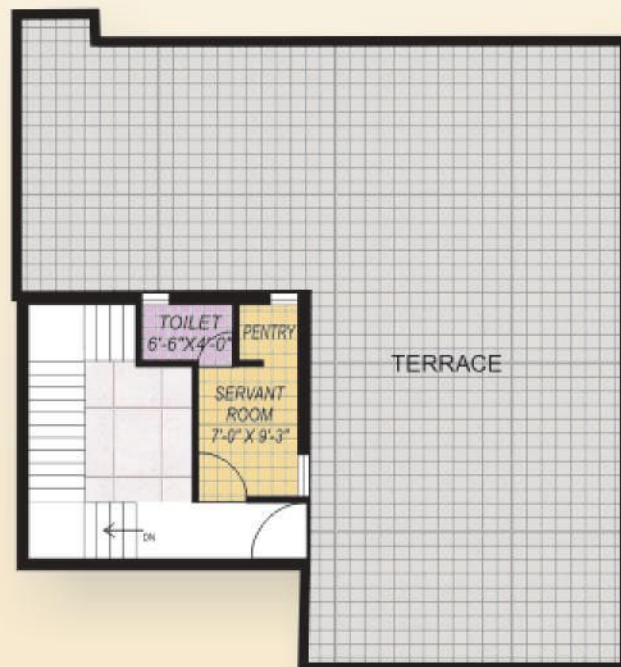




GROUND FLOOR PLAN  
COVERED AREA = 2852 SQ. FT.



FIRST FLOOR PLAN  
COVERED AREA = 1945 SQ. FT.



MUMTY (TERRACE) FLOOR PLAN  
MUMTY. COVERED AREA = 416 SQ. FT.

TOTAL PLOT AREA = 500 SQ. YD.  
(APPROX.)  
TOTAL COVERED AREA  
= 5215 SQ. FT

SPECIFICATIONS FOR

**Rainbow**  
Roofs

**Rainbow**  
Heights

**Rainbow**  
Classic

- STRUCTURE : Earthquake resistant R.C.C. framed structure with AAC block / first class brick work in 1:6 cement sand mortar.
  - PLASTERING: Plastering shall be done in 1:5 cement, sand mortar / gypsum plaster.
  - FLOORING: High quality vitrified tiles in entire living area with suitable sizes. 12" x 12" anti skid ceramic tiles in toilets & open areas.(Terraces, Balconies etc.)
  - PAINTING: Synthetic emulsion on all internal areas with different pastel shades. Weather proof paint on all outer surfaces. Door and windows will be painted with white satin enamel paint.
  - DOOR SHUTTERS: High quality factory made flush doors with mortise lock and stainless steel fittings, fitted on well seasoned chap / mirandi wood frames.
  - WINDOW SHUTTERS: Well seasoned chap / mirandi wood window shutters both glass and stainless steel mosquito net with standard stainless steel fittings and glass, fitted on well seasoned chap / mirandi wood frames.
  - ELECTRIFICATION: ISI marked fire resistant copper wiring in concealed PVC conduits, modular switches, sockets etc in adequate numbers. A/C points in all bed rooms, inverter and cable TV wirings are also provided.
  - POP : Aesthetically suitable POP cornice and moldings etc. in all bed rooms, drawing room and lobby.
  - KITCHEN: Modular kitchen with granite top fitted with stainless steel sink with single bowl and drain board, glazed ceramic wall tiles on all walls up to cill level and up to 2' above working platform, with a provision of hot and normal water supply and a point for water purifier.
  - TOILET: Aesthetically suitable glazed ceramic tiles upto door level, fitted with modern range of high quality sanitary wares and fittings.
- NOTE : Space for wardrobe is to be provided in all bedrooms.

SPECIFICATIONS FOR

**Rainbow**  
Roofs PREMIUM

- STRUCTURE : Earthquake resistant R.C.C. framed structure with AAC block / first class brick work in 1:6 cement sand mortar.
- PLASTERING: Plastering shall be done in 1:5 cement, sand mortar / gypsum plaster.
- FLOORING: High quality vitrified tiles in entire living area with suitable sizes. 12" x 12" anti skid ceramic tiles in toilets and open areas.(Terraces, Balconies etc.)
- PAINTING: Synthetic emulsion on all internal areas with different pastel shades. Weather proof paint on all outer surfaces. Door and windows will be painted with white PU (duco paint) .
- DOOR SHUTTERS: High quality factory made molded doors with high quality mortise lock and stainless steel hardware. Well seasoned chap / mirandi wood mosquito net doors fitted on well seasoned chap / mirandi wood frames.
- WINDOW SHUTTERS: All windows are double paneled saperate for glass and stainless steel mosquito mesh of well seasoned chap / mirandi wood, fitted with iron grill and high quality stainless steel fittings.
- WARDROBES: Complete wooden wardrobes shell be provided in every bed room.
- KITCHEN: Fully modular kitchen with granite working platform and cabinets fitted with premium quality fittings.
- ELECTRIFICATION: ISI marked fire resistant copper wiring in concealed PVC conduits, modular switches, sockets etc. in adequate numbers. A/C points in all bed rooms, inverter and cable TV wirings are also provided.
- POP : Aesthetically designed false ceilings POP cornice and moldings etc. in whole villa.
- TOILET: Aesthetically suitable glazed ceramic tiles upto door level, fitted with high quality C.P. fittings, wash basin, water closets (seats) of premium make.